



# GMT MONTHLY MEMBERSHIP PROGRESS REPORT

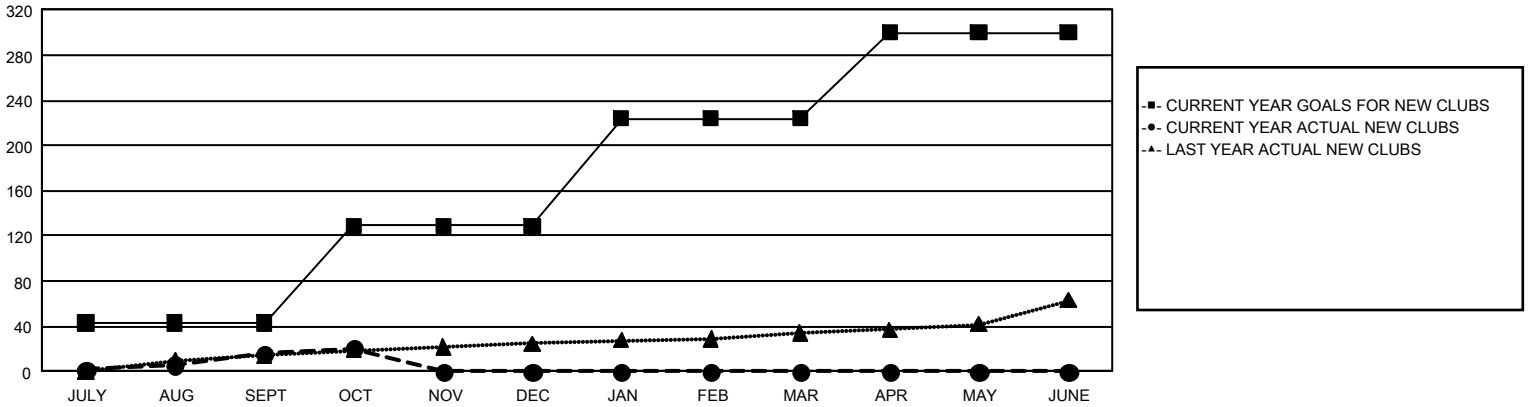
## GAT Constitutional Area 1

Results as of: 10/31/2023

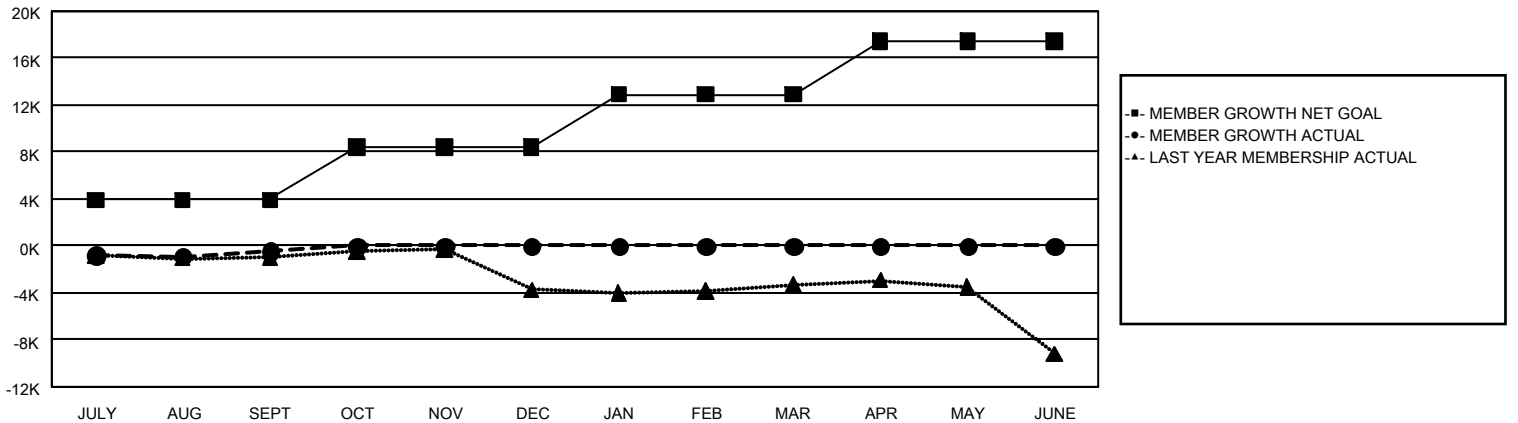
REPORT DOES NOT INCLUDE CLUBS IN UNDISTRICTED AREAS.

Clubs				Members			
RESULTS FOR 2023-2024				RESULTS FOR 2023-2024			
QUARTER	NEW CLUB GOAL	NEW CLUBS	DROPPED CLUBS	QUARTER	MEMBER GROWTH NET GOAL	MEMBER GROWTH ACTUAL	DROPPED MEMBERS ACTUAL (including transfers)
JULY/AUG/SEPT	43	16	62	JULY/AUG/SEPT	3,936	8,134	7,639
OCT/NOV/DEC	86	5	14	OCT/NOV/DEC	4,494	2,850	2,150
JAN/FEB/MAR	95	0	0	JAN/FEB/MAR	4,481	0	0
APR/MAY/JUNE	76	0	0	APR/MAY/JUNE	4,534	0	0

GOALS AND ACTUAL NEW CLUBS CUMULATIVE



GOALS AND ACTUAL MEMBERS CUMULATIVE



DROPPED CLUBS: 76

3,608 CLUBS OF 10,091 ADDED 1 OR MORE NEW MEMBERS

GENDER DISTRIBUTION

MALE 169,412 (63.62%)  
FEMALE 96,726 (36.33%)

DROPPED MEMBERS

DECEASED	1,347
CLUB CANCELLED	193
OTHER	8,279
<b>TOTAL</b>	<b>9,819</b>

[CLICK HERE FOR CUMULATIVE MEMBERSHIP DATA](#)

TOTAL FAMILY UNIT MEMBERS	51,875
FAMILY MEMBERS PAYING HALF DUES	26,692